



NC-PCC

MODULAR PISTOL CALIBER CARBINE
OWNER'S MANUAL



Thank you for choosing Nordic Components!

Your new NC-PCC is ready to use right out of the box, but before you get started, please carefully study and diligently practice the safety and operational procedures outlined in this instructional manual. Doing so will ensure years of reliable service while maintaining a safe and enjoyable shooting experience for yourself and those around you.

LIMITATION OF LIABILITY

PRODUCTS ARE SOLD BY US WITH THE EXPRESS AND SPECIFIC UNDERSTANDING THAT NORDIC COMPONENTS, INC. IS NOT RESPONSIBLE IN ANY WAY FOR: PHYSICAL INJURY, INCLUDING, BUT NOT LIMITED TO, HEARING LOSS OR EYE DAMAGE RESULTING FROM FAILURE TO TAKE ADEQUATE PRECAUTIONS WHILE SHOOTING; PROPERTY DAMAGE RESULTING IN WHOLE OR IN PART FROM CRIMINAL OR NEGLIGENT DISCHARGE; UNSAFE, IMPROPER USE, OR CARELESS HANDLING BY THE USER; UNAUTHORIZED MODIFICATIONS; DEFECTIVE, IMPROPER, RELOADED, HAND LOADED, OR NON-STANDARD AMMUNITION OR IMPROPER CALIBER USAGE; CORROSION, ABUSE OR NEGLECT; OR OTHER INFLUENCES BEYOND OUR DIRECT AND IMMEDIATE CONTROL. PURCHASE AND USE OF THIS PRODUCT IMPLIES CONSENT TO THESE TERMS.



Warranty Information

NO WARRANTY CARD HAS BEEN INCLUDED WITH THIS NEW NORDIC COMPONENTS PRODUCT

The Magnuson-Moss Act (Public Law 93-637) does not require any seller or manufacturer of a consumer product to give a written warranty. It does provide that if a written warranty is given, it must be designated as "limited" or as "full" and sets minimum standards for a "full" warranty. Nordic Components, Inc. has elected not to provide any written warranty, either "limited" or "full", rather than to attempt to comply with the provisions of the Magnuson-Moss Act and the regulations issued thereunder. There are certain implied warranties under state law with respect to sales of consumer goods. As the extent and interpretation of these implied warranties varies from state to state, you should refer to your state's law.

Local, State & Federal Restrictions

According to the NRA-ILA website; "There are estimated to be more than 20,000 gun laws in America at the federal, state and local levels and laws vary greatly from state to state and, in some states, from locality to locality. Since 1968 virtually every aspect of lawful firearms commerce from manufacture to retail sales has been strictly controlled and regulated by the federal government." It is your responsibility to educate yourself on the laws pertaining to firearms ownership, transfer, transport, and storage in your area.

Questions/Concerns

If, at any time, you are unclear on any of the safety or operational procedures discussed in this manual or are having difficulties with your firearm, please contact Nordic Components, Inc. for assistance at 952-442-8900 or email sales@nordiccomp.com. Our customer service and technical support departments are available to you should you have any questions or concerns.

Problems/Returns

We make every effort to supply products in the best possible condition; however, issues can arise from time to time. If there is a problem with our product, or if a shipment was damaged in transit, call us immediately for assistance and instructions at 952-442-8900. Remember that it is illegal to ship a firearm and ammunition in the same package. Ammunition must be shipped separately.



ATTENTION:

EYE AND EAR PROTECTION IS STRONGLY RECOMMENDED WHEN ENGAGED IN, OR SIMPLY OBSERVING, SHOOTING ACTIVITIES. RICOCHETS ARE COMMONPLACE AND CAN TRAVEL GREAT DISTANCES OUTSIDE OF AN OTHERWISE CONTROLLED SHOOTING AREA. IT IS HIGHLY RECOMMENDED THAT EYE PROTECTION BE WORN AT ALL TIMES AND IN ALL AREAS OF THE FIRING RANGE.

ATTENTION:

USE ONLY HIGH QUALITY, COMMERCIALY PRODUCED, AMMUNITION IN THE APPROPRIATE CALIBER FOR THIS FIREARM. THE AMMUNITION MUST MATCH THE CALIBER MARKED ON THE BARREL OF THE FIREARM. DO NOT USE CARTRIDGES WITH SHARP SHOULDERED OR "EXPLOSIVE" BULLETS.

WARNING:

CARELESS OR NEGLIGENT HANDLING, OR FAILURE TO FOLLOW THE RECOMMENDED SAFETY PROCEDURES OUTLINED HEREIN, MAY RESULT IN DAMAGE TO PROPERTY, SEVERE INJURY, OR DEATH. ANY RESULTING DAMAGE TO THE FIREARM IS NOT COVERED UNDER WARRANTY BY NORDIC COMPONENTS, INC.

WARNING:

DO NOT, UNDER ANY CIRCUMSTANCES, ATTEMPT TO ALTER OR MODIFY YOUR FIREARM OR PERFORM SERVICE BEYOND GENERAL MAINTENANCE. DOING SO MAY VOID YOUR FACTORY WARRANTY AND JEOPARDIZE YOUR SAFETY. PLEASE CONTACT NORDIC COMPONENTS, INC. IF THERE IS A PROBLEM.



WARNING:

DISCHARGING FIREARMS IN POORLY VENTILATED AREAS, CLEANING FIREARMS, OR HANDLING AMMUNITION MAY RESULT IN EXPOSURE TO LEAD AND OTHER SUBSTANCES KNOWN TO CAUSE BIRTH DEFECTS, REPRODUCTIVE HARM, AND OTHER SERIOUS PHYSICAL INJURY. HAVE ADEQUATE VENTILATION AT ALL TIMES AND WASH HANDS THOROUGHLY AFTER EXPOSURE.

WARNING:

UNFIRED ROUNDS MAY NOT ALWAYS EJECT OUT OF THE FIREARM'S CHAMBER. ALWAYS VISUALLY CHECK TO SEE THAT THE CHAMBER IS CLEAR!

Simply retracting the charging handle is not verification of an empty chamber. You must LOOK at the chamber.



Safety

Firearms safety is everyone's responsibility. Do your part by ensuring that you and those around you are consistently practicing the safe handling of all firearms. Although the list does not stop here, the five fundamental rules for the safe handling of firearms are:

ALWAYS treat every firearm as though it is loaded. It is up to you alone to verify the condition of every firearm, every time you pick it up.

NEVER point any firearm at anything you are not willing to destroy. This includes muzzle awareness, both on and off the range, even when the firearm is known to be unloaded.

ALWAYS verify your target and what is around and beyond it. Choosing a suitable backstop is imperative. This includes the handling of firearms in the home. Do not assume that your target will stop a bullet.

ALWAYS keep your finger off of the trigger and out of the trigger guard until the firearm is intentionally pointed downrange at a verified target, in front of a suitable backstop, and you are ready to fire.

ALWAYS store firearms unloaded and in a locked location away from children. Each state has specific regulations that may change and it is your responsibility to know and follow these regulations.



SAFETY IS CRITICAL TO PERFORMANCE

Your Nordic rifle is only as good as the hands that hold it. You can never be too careful. Frequently, firearms accidents are the result of carelessness or inattentiveness such as failing to control the direction of the muzzle, failing to properly engage the safety, leaving the rifle loaded or using improper ammunition. This carelessness can result in the destruction of life, limb or property. The principles of safe firearm handling and storage must be known before you unpackage your rifle; there are no do-overs.

Function and performance of your firearm depends on proper use and maintenance, so the information in this instruction book must be known and understood. Not all firearms are the same, and there can be new information for even the most experienced firearms owner. To handle your firearm safely, you must first learn the features and requirements of your new rifle.

The Ten Commandments of Firearm Safety should be etched in your memory forever and should dictate your action anytime you're involved with firearms. Take the time to review and understand these rules.

1st Commandment: Always keep the muzzle pointed in a safe direction

This is the most important firearm safety rule. A safe direction is one in which an accidental discharge will not cause injury to yourself or others. Never allow your firearm to point at anything you don't intend to shoot. Be especially careful when you're loading or unloading. Treat every firearm as if it were loaded. Make it a habit to know where the muzzle is pointed at all times, even when your firearm is unloaded. Even if you have a negligent or accidental discharge, as long as the muzzle is pointed in a safe direction, no one should be harmed.



2nd Commandment: Firearms should be unloaded when not actually in use

Load your firearm only when you're in the field or on the range and ready to fire. Never let a loaded firearm out of your sight or out of your hands. Unload it as soon as you're finished shooting. Remember, unloading your firearm means unloading it completely, so there is no ammunition in the chamber or in the magazine. Before handling a firearm or passing it to someone else, visually check the chamber, receiver and magazine to be certain they do not contain ammunition. Always keep the firearm's action open when not in use. Never assume a firearm is unloaded -- always check for yourself.

- Let common sense rule when you carry a loaded firearm. If you're in a situation that could risk accidental discharge - such as crossing a fence, wading through a stream or climbing a tree - always unload your firearm. Never pull or push a loaded firearm toward yourself or another person. Never carry a loaded firearm in a scabbard, detached holster or gun case.
- Certain firearms are equipped with internal security devices to prevent unauthorized use. In addition, some firearms owners use external devices, such as cable locks and trigger blocks, for the same purpose. Even if you use such a device, you should still keep your firearm unloaded when stored or not in use. Internal or external devices cannot substitute for securing your firearms and ammunition in a separate, locked location.
- Safe storage of firearms is just as critical as safe handling. Never store firearms loaded. Be sure to keep your firearms in a secure place where unauthorized persons cannot get their hands on them without your knowledge.
- Take special care if there are children around. Children are fascinated by firearms. It's a natural curiosity that can have tragic consequences when not properly supervised. Store your firearms in a locked gun safe or some other location that physically bars a child from gaining access.
- Ammunition should be stored and locked in a location separate from your firearm. Never leave an unsecured firearm or ammunition in a closet, dresser drawer or under the bed. Remember, it is your responsibility to make sure that children and others unfamiliar with firearms cannot get access to your firearm and ammunition.



3rd Commandment: Don't rely on your firearm's safety.

Treat every firearm as if it can fire at any time, whether or not there's pressure on the trigger. Your firearm has been carefully designed to maximize performance and safety. However, because a firearm's safety is a mechanical device, it can still fail. Human error is a more likely reason for a firearm safety to fail. By mistake, you may think the safety is on when it really isn't, or the safety may have been disengaged without your knowledge. You could think your firearm is unloaded when there's actually a cartridge or shell in it. A mechanical safety is not a substitute for common sense. It is only a supplemental mechanism to aid proper handling of a firearm by the operator.

Keep your fingers away from the trigger until you're ready to shoot, and when you're loading or unloading. Don't pull the trigger when the safety is engaged or positioned between safe and fire.

Before using your firearm, read this instruction book to understand the exact location and operation of your firearm's safety. Even when the safety is engaged, maintain control of your loaded firearm and control the direction of the muzzle. If your firearm's internal mechanisms are broken or have been altered, your firearm may fire even when the safety is on. Remember, you and your safe firearm handling practices are your firearm's best safety.

4th Commandment: Be sure of your target and what's beyond it.

Once you pull the trigger, you can never call that bullet back. Never fire unless you know exactly where your shot is going and what it will strike. Never fire at a sound, a movement or a patch of color. A hunter in camouflage can easily be mistaken for a target by an impulsive shooter.

Before you pull the trigger be absolutely sure of your target and what's behind it. Make sure the shot has a backstop such as a hillside or dense material like sand. Remember, bullets can travel great distances with tremendous velocity.

Be sure to know where your shot might go if you miss the target or if the bullet is not stopped by the target.

Be aware and mindful of the possibility of ricochets; never shoot at a hard surface or water.

Know how far your shot will go if you miss your target or the bullet ricochets.



5th Commandment: Use proper ammunition.

Each firearm is designed to use a certain type of ammunition. Using the wrong ammunition, mixing ammunition or using improperly reloaded ammunition can cause serious personal injury or death. It only takes one cartridge or shotshell of the incorrect caliber or gauge, or which has been improperly reloaded, to destroy your firearm. It's your responsibility to make sure the ammo you use exactly matches the firearm. Always read the instructions on ammunition boxes.

Mixing shells or cartridges can cause serious personal injury or death and destroy your firearm. Check your shells or cartridges closely and use only the precise caliber or gauge for your specific firearm.

Check all ammunition before you load it to make sure it matches your firearm. You'll find the caliber of your new Nordic Components firearm marked on the barrel.

6th Commandment: If your firearm fails to fire when the trigger is pulled, handle with care

If for some reason the ammunition doesn't fire when you pull the trigger, stop and remember the 1st Commandment of Firearm Safety - always keep the muzzle pointed in a safe direction. Keeping your face and hands away from the breech as much as possible, put the safety on, carefully open the action, unload the firearm and dispose of the cartridge safely. Anytime there's a shell in the chamber, your firearm is loaded and ready to use, and could still discharge.

7th Commandment: Always wear eye and ear protection when shooting

Your sight and hearing risk injury from shooting and should be protected at all times. Wear protective shooting glasses to guard against powder residue, ruptured cartridge cases, and debris in the field. Always wear eye protection when you're disassembling or cleaning a firearm so that tensioned parts and cleaning products don't come in contact with your eyes.

Unprotected exposure to shooting noise will permanently damage your hearing. On the range, be sure to use protective earmuffs or earplugs. Learn to use ear protection at all times. Only discharge your firearm in well-ventilated areas.



8th Commandment: Be sure the barrel is clear of obstructions before shooting

Before loading your firearm, open the action and make sure the chamber and magazine are empty. Check the barrel for any obstructions or debris. Even a small amount of snow, mud, or excess lubricant or grease in the bore can dangerously increase pressure and cause the barrel to bulge or burst when firing. Use a cleaning rod and patch to wipe away anti-rust compounds or any other residues or obstructions in the barrel. Never try to shoot out an obstruction by loading another shell and firing!

When firing, rely on your instincts. If the noise or recoil of your firearm seems weak, unload your firearm and be sure nothing is lodged in the barrel. Always be sure you're using the correct ammunition in your firearm and that it's free of obstructions.

9th Commandment: Don't alter or modify your firearm and have it serviced regularly.

Your firearm has been designed to operate according to certain factory specifications. You'll jeopardize your safety and that of others around you by attempting to alter its trigger, mechanical safety or other mechanisms. Never alter or modify your firearm in any way. Like any mechanical device, a firearm is subject to wear. It must be maintained and periodically serviced to assure safety and performance. Only a qualified service facility should service, repair or modify your Nordic Components firearm. Consult your instruction book for instructions on how to send your firearm to the factory. Proper cleaning and lubrication are also important to firearm maintenance and are necessary to assure accuracy, safety and reliability. Before cleaning, always make sure that your firearm is completely unloaded. And always clean the barrel from the chamber end to the muzzle when possible.

Make it a practice to clean your bore after each shooting session. Be sure to clean your entire firearm before and after long-term storage and no less than once a year. It's also important to clean your firearm whenever it's been exposed to adverse conditions such as rain, dirt, mud, snow, sleet or saltwater.

For safe and dependable operation of your firearm, all parts of your firearm must be properly cleaned and lubricated. Periodically inspect the internal workings of your firearm to be sure they're clean and free of rust, dirt, and debris.

Use recommended lubricants on your firearm and do not over-lubricate. Excessive use of a non-recommended lubricant could adversely affect the function and safe operation of your firearm.

Failure to properly maintain your firearm cannot only damage your firearm, it can cause personal injury or death.

10th Commandment: Learn the mechanics and handling characteristics of your firearm.

Not all firearms are alike. They have different mechanical characteristics that dictate how you should carry and handle them. Anyone who plans to use a firearm should first become totally familiar with the type of firearm it is and the safe handling procedures for loading, unloading, carrying, shooting, and storing it.

Before you unpack your new Nordic Components rifle, read this instruction book from cover to cover and familiarize yourself with the different component parts of the firearm. Then read, understand and follow the Ten Commandments of Firearm Safety in this manual.

There's one other rule that must be followed when handling firearms. Respect for this rule is necessary in order to effectively practice the Ten Commandments of Firearm Safety. The rule is: **SHOOT SOBER!** Firearms and alcohol or drugs make a deadly combination. Never consume anything that would impair your judgment or physical coordination when you're using a firearm. A large number of the shooting accidents that occur involve alcohol or drugs. Be smart. Always shoot sober and stay alive.

LEAD WARNING

Discharging firearms in poorly ventilated areas, cleaning firearms, or handling ammunition may result in exposure to lead and other chemicals known to cause birth defects, reproductive harm, cancer, and other serious physical injury. Have adequate ventilation at all times. Wash hands thoroughly after exposure.



NC-PCC Features & Operation

Interchangeable Magwells

The NC-PCC features an innovative modular magwell system. By simply changing out magwells, the NC-PCC can accept a variety of handgun magazines. See www.nordiccomp.com for a complete list of available platforms.

Magazines

Only OEM magazines (specific to the magwell installed) are recommended for use in the NC-PCC. Other magazines may function with the firearm, but reliable operation cannot be guaranteed by Nordic Components.

Last-round Hold Open

Unlike many pistol caliber carbines, the bolt of the NC-PCC will lock back on an empty magazine in the same manner as a traditional AR rifle. The NC-PCC uses the same bolt catch as a standard AR-pattern rifle, and can accept many of the related accessories.

Muzzle Threading

The NC-PCC features a caliber-appropriate threaded barrel, designed to accept a variety of muzzle devices.

WARNING: Due to varying thread specifications, it may be possible to install a non-caliber appropriate muzzle device on your barrel. Before replacing the factory muzzle device, ENSURE THE NEW DEVICE IS CORRECT AND COMPATIBLE WITH THE CALIBER OF YOUR FIREARM. Use of an incorrect muzzle device could result in catastrophic failure of the firearm and severe injury.

General Operation

The NC-PCC is a blowback operated firearm, using the energy of the fired round is used to cycle the action. Because of this, the NC-PCC does not have a gas system. As the weight of the bolt and buffer, along with the strength of the buffer spring, are critical to reliable operation, any modification or change of any these components will impact function and safety of the firearm. **Nordic Components recommends using only OEM components and cannot guarantee function or operator safety with aftermarket or modified parts.**



Changing Magwells

One of the main features of the NC-PCC is the modular magwell system. This allows easy, rapid reconfiguration of the firearm to accept a different type of magazine (e.g. Glock to Smith & Wesson M&P) without tools or major disassembly of the firearm. The NC-PCC ships with one magwell included; additional magwells are available separately, and include all necessary components for operation.

Removing the Magwell

- Push the magazine release button to remove the magazine.
- Pull back the charging handle and look in the ejection port to verify that the chamber is empty.
- Push the magwell retaining pin to the left and pull it out until the pin stops.
- The magwell is now completely unfastened and can be pulled forward and dropped down off the lower receiver.



NOTE: Reinstallation of the magwell follows these steps in reverse. Ensure that the magwell is engaging the rail on the underside of the receiver and is fully seated against the receiver face, and that the bolt catch lifter is still properly installed before securing the magwell pin.

If you are changing to a magwell that requires a different bolt catch lifter, the upper receiver must be removed using the following steps:

- Push the takedown pin to the left and pull it out from the right until the pin stops (note that this will allow the upper receiver to pivot forward; ensure the handguard/barrel are supported).
- Push the pivot pin to the left and pull it out from the right until the pin stops. Remove the upper receiver from the lower receiver. The lifter is captured under the bolt catch, which must be depressed to remove the lifter.



- To reinstall the lifter, push the bottom of the bolt catch to raise the catch and slide the short arm of the lifter underneath, so that the short arm can raise the catch.
- Slide the long arm of the lifter into its slot in the lower receiver and align the pivot pin hole on the arm with the holes in the pivot pin bosses.
- Reinstall the upper receiver, and push the pivot pin back into place. Ensure the lifter remains properly aligned with the pivot pin, or the pin will not seat fully.
- To verify lifter function, insert an empty magazine and pull the charging handle back. The bolt should remain locked open.

CAUTION: If/when not installed, ensure the lifter is securely stored and protected from damage. Any bending or other malformation of the lifter can cause failure to function or prevent proper installation.

Lower Receiver

Aside from the interchangeable magwell assembly, the NC-PCC lower receiver is designed to accept most of the same lower receiver components as a standard AR15-pattern rifle. This includes aftermarket fire control groups, furniture, and manipulation accessories.

NOTE: Nordic Components cannot guarantee function of a firearm with aftermarket or modified components, and do not warranty against damage caused by non-OEM products.

CAUTION: The NC-PCC is available as a pistol, rifle, or short-barreled rifle. Modification or addition of certain components may change the classification of your firearm. Ensure you have done proper research before changing any of these components. ALL NFA RULES APPLY.

Function with NFA-regulated Devices

Depending on the caliber and configuration of your NC-PCC, you may be able to attach a suppressor mount to your barrel or directly thread a suppressor to the barrel. The indicated caliber of the device must match the caliber marked on the barrel of the firearm. **YOU MUST ENSURE THAT ANY DEVICES ATTACHED TO THE BARREL ARE DESIGNED FOR THE CALIBER OF YOUR FIREARM.** Failure to verify this may result in catastrophic failure of the firearm and serious injury.

Contact Nordic Components before attempting to install or use any sort of automatic-fire components or devices. Due to the nature of blowback firearms, special care must be taken while firing automatically.



OPERATION OF THE NC-PCC

Detailed instructions about the function and use of your NC-PCC.

Clearing Your Firearm

ALWAYS FOLLOW THE RULES OF SAFE GUN HANDLING. Assume the rifle is loaded, and then proceed according to the following steps to clear the firearm:

1. Point firearm in a safe direction.
2. Place safety selector lever on SAFE. Note: If the firearm is not cocked, the safety selector lever cannot be placed on SAFE.
3. Press magazine release button and remove magazine.



4. To lock bolt open, pull charging handle to rear. **VISUALLY INSPECT THE CHAMBER TO ENSURE IT IS EMPTY.**



5. Hold down the lower portion of bolt catch and allow bolt to move forward until it engages bolt catch. Return charging handle to forward position. Make sure the safety selector lever is on SAFE.

Preventative Maintenance Checks & Services

1. With your firearm completely UNLOADED and the bolt locked open, check to see that there is no excessive oil in the bore. If there is, swab it out with a patch and the cleaning rod. Always clean a new firearm before firing. If the firearm is fired with oil, water, or other obstructions in the barrel, excessive pressure may be created causing the rifle to fail catastrophically.
2. Retract the bolt to ensure free movement of the bolt and charging handle.
3. Perform safety function check to ensure that safety selector lever works properly.

Safety Function Check

1. Remove magazine. Pull charging handle completely to rear. Visually check to make sure the chamber is clear and empty, then release the bolt.
2. Place selector lever in SAFE position, point rifle in a safe direction, and pull trigger. THE HAMMER SHOULD NOT FALL.
3. Place safety selector lever in FIRE position. Pull the trigger. THE HAMMER SHOULD FALL.
4. Hold trigger to the rear, pull charging handle to the rear and release charging handle. Then release pressure on the trigger with a slow, smooth motion, without hesitations or stops, until the trigger is fully forward. AN AUDIBLE CLICK SHOULD BE HEARD - THE HAMMER SHOULD NOT FALL.
5. Repeat this safety function test FIVE TIMES. The firearm must not malfunction during any of these five tests. If the firearm malfunctions during any of these tests, stop using the firearm and have it serviced by a gunsmith or contact Nordic Components.

Loading, Firing, and Unloading

Loading Your NC-PCC

- Holding the magazine upright and with the bullet facing forward, position the cartridge on top of the follower, ahead of the feed lips (The follower and top of magazine should angle upwards toward the front of the magazine).
- Press down and back on the cartridge with your thumb so that the rear of the case clears the feed lips and slides fully to the rear.
- Repeat this process until the magazine is loaded to the desired capacity. With higher capacity magazines, use of a magloader accessory (not provided) may be helpful as the magazine fills.
- Magazine loading procedures may vary according to the type of magazine in use. If necessary, consult information provided by the magazine manufacturer.



(Glock extended capacity magazine pictured, not included)

Loading Your NC-PCC

Before loading, ensure that the magwell is fully seated, that the magwell pin is fully engaged, and that the pivot pin is properly indexed with the bolt catch lifter.

- Pick up the firearm, keeping your finger off of the trigger and out of the trigger guard.
- Disengage the charging handle latch and pull the charging handle fully to the rear.
- While holding the handle back, look in through the ejection port and visually verify that the chamber is clear. If clear, release the charging handle so the bolt closes. The hammer will be cocked during this process.



- You should now flip the safety selector to the "SAFE" position.
- As you continue to point the firearm in a safe direction, pick up the loaded magazine and orient it so that it is upright and the bullets in the magazine are pointing forward (toward the muzzle of the firearm).
- Insert the magazine up into the lower receiver through the magazine well and push up until you see and hear the magazine catch locking the magazine place.

- Verify that the magazine is fully seated by gently pulling down on the magazine. If fully seated, the magazine will remain locked in place.
- If the bolt is locked back, push the upper portion of the bolt release. The bolt should spring forward, chambering a round from the magazine and making the firearm ready to fire.
- If the bolt is forward, pull the charging handle fully to the rear, then release the charging handle, allowing the bolt to spring forward. This will chamber a round from the magazine and the firearm will be ready to fire. Never “ride” or “push” the charging handle forward; let the charging handle and bolt move forward under their own power.



CONDITION: The firearm is now loaded and ready to fire, with the hammer cocked and a live round in the chamber. The safety selector should be on SAFE.

WARNING: THE FIREARM CAN FIRE A CHAMBERED ROUND EVEN IF THE MAGAZINE HAS BEEN REMOVED.

WARNING: KEEP THE MUZZLE POINTED IN A SAFE DIRECTION

Firing Your NC-PCC

1. Once a round is chambered and you are ready to commence firing, move the safety selector from SAFE to FIRE.
2. Making sure of your target and what is beyond it, take aim at the target.
3. Squeeze the trigger until the trigger “breaks” and the cartridge is fired. Once the cartridge has fired, release the trigger.
4. The firearm will automatically eject the spent cartridge and chamber another in preparation for the next shot. The cycle of pulling the trigger to shoot and the firearm automatically reloading can be continued until the magazine and chamber are empty.

If you stop firing before the chamber is empty, immediately place the safety selector in the SAFE position and keep the firearm pointed in a safe direction.

NOTE: After the last round in the magazine has been loaded and fired, the bolt will lock to the rear. You can then insert a new magazine and either push the bolt catch release button or cycle the charging handle to chamber a new round and resume firing.

WARNING: IF A NOTICEABLE DIFFERENCE IN SOUND OR RECOIL IS EXPERIENCED, STOP FIRING IMMEDIATELY.

Either condition could indicate incomplete powder burn and/or a bullet stuck in the bore. Remove the magazine and retract the bolt to empty the chamber. Check for unburned powder grains in the receiver or bore and for a bullet stuck in the bore. Clean out any unburned powder before resuming firing. If a bullet is stuck in the bore, do not attempt to remove it. Take the rifle to a gunsmith for removal or contact Nordic Components.

WARNING: DO NOT LOAD WITH A HOT CHAMBER - A ROUND MAY “COOK OFF”.

Cooking off means that a round may detonate from the heat of the rifle's chamber.



Unloading Your NC-PCC

WARNING: ALWAYS KEEP THE MUZZLE POINTED IN A SAFE DIRECTION THROUGHOUT THE UNLOADING PROCESS!

1. Place the safety selector on SAFE.
2. Press the magazine release button and remove the magazine.
3. Pull the charging handle to rear. Press the lower portion of the bolt catch; the bolt should lock open as the handle is released. If a round was in the chamber, it should have been ejected.



4. Visually check the chamber through the ejection port to make sure the chamber is empty.
5. With the magazine removed and the chamber empty, close the bolt by pushing the top of the bolt catch to allow the bolt to return forward on the empty chamber.
6. Empty the magazine by sliding the remaining cartridges forward and out of the magazine.

CONDITION: The rifle and magazine are now completely unloaded. Securely store ammunition and rifle separately.

Remedial Actions

IF YOUR RIFLE STOPS FIRING, perform the following immediate actions:

1. Tap upward on magazine base to ensure it is fully seated.
2. Pull charging handle all the way back. Observe the ejection of the case or cartridge. Check chamber for any obstruction.
3. If cartridge or case is ejected, or chamber is clear, release charging handle to feed a new round into the chamber. Don't "ride" the charging handle forward.
4. Pull the trigger -- the rifle should fire.

NOTE: If pulling the charging handle fully to the rear does not extract and eject the chambered cartridge or case, then the cartridge or casing may be stuck in the chamber. If this occurs do the following:

1. Remove the magazine.
2. Lock the bolt open.
3. Open the receiver.
4. Remove the bolt assembly.
5. Try to tap out cartridge or casing with a cleaning rod.

IF THE CARTRIDGE OR CASE CANNOT BE TAPPED OUT WITH THE CLEANING ROD, TAKE THE RIFLE TO A GUNSMITH OR CONTACT NORDIC COMPONENTS



Bullet Stuck in the Bore

WARNING: IF AN AUDIBLE “POP” OR REDUCED RECOIL IS EXPERIENCED DURING FIRING, IMMEDIATELY CEASE FIRING AND THEN PERFORM THE FOLLOWING STEPS:

1. Place the selector lever on SAFE.
2. Remove the magazine.
3. Lock the bolt to the rear.
4. Use a cleaning rod to check for a bullet in the bore.

WARNING: IF A BULLET IS STUCK IN THE BARREL, DO NOT TRY TO REMOVE IT. TAKE THE RIFLE TO A GUNSMITH OR CONTACT NORDIC COMPONENTS.

Upper Disassembly

NOTE: Wear protective eyewear during disassembly to protect your eyes from spring loaded components.

1. Clear the rifle as previously outlined.
2. Push in takedown pin (a punch may help) as far as it will go. Pivot upper receiver from lower receiver.
3. Push in pivot pin (note: take care that the bolt catch lifter is not lost, as it will be loose once the pivot pin is pushed in)
4. Pivot lower receiver down and away from upper receiver.
5. Slide the charging handle back part-way and remove the bolt.
6. Remove charging handle by pulling back and up until “ears” clear cutouts in receiver.



7. To remove the firing pin, first remove the firing pin retainer. This can be pushed from right to left using a punch or similar tool. This will release the spring-loaded firing pin -- ensure that you have control of the assembly and that the pin/spring are not lost.

8. To separate the bolt halves, use a punch to depress the bolt index pin at the rear of the front half. With the index pin depressed, the bolt tail can be rotated 90 degrees and removed to allow easier access to the bolt for cleaning.

No further disassembly of the upper is recommended or should be required.

Maintenance Overview

Routine maintenance is critical to keeping your NC-PCC firearm in top working order for years to come.

Inspection, Cleaning, and Lubrication

After firing your rifle, clean it as soon as possible to make the job easier and to avoid allowing the development of any corrosion.

When your firearm has not been fired, you should clean it once or twice a year if you live in a temperate climate, or as often as once a week in a tropical climate. If you get your firearm wet, clean it as soon as possible to avoid the onset of corrosion or rust.

After you have disassembled the rifle, thoroughly clean, inspect and lubricate all parts according to the techniques described below.

WARNING

NEVER CLEAN A LOADED FIREARM. BEFORE CLEANING, COMPLETELY UNLOAD THE RIFLE AND DISASSEMBLE AS NECESSARY.



Detailed Cleaning Techniques

Cleaning the Bore

The bore of your Nordic Components NC-PCC has lands and grooves called rifling. Rifling makes the bullet spin as it moves down the bore and down range. It is difficult to push a new, stiff bore brush through the bore. You will find it much easier and more effective to pull the brush through the bore.

Also, because the brush will clean better if the bristles follow the grooves, the brush should be allowed to turn as it travels through the bore. A high quality cleaning rod with a ball bearing handle which allows the rod to turn will assist in cleaning your rifle.

Do not use a steel cleaning rod, as this can permanently damage the bore.

ALWAYS CLEAN FROM CHAMBER TOWARD THE MUZZLE.

Follow these steps:

1. Assemble your cleaning rod as necessary. Attach the patch holder to cleaning rod.
2. Pointing the muzzle down, hold the upper receiver in one hand while inserting the end of the rod with patch holder attached into the chamber. Carefully guide the rod through the bore.

CAUTION: Do not let the rod or its threaded end scratch the bore or chamber.

3. Moisten a patch with bore cleaner and run it through the bore.
4. Remove the patch holder and attach the bore brush.
5. Push the brush through the bore and out the muzzle. The rod should turn as you push it through - as described earlier, this is the brush "tracking" in the rifling. NEVER reverse the direction of the bore brush while it is in the bore.

6. After running the brush through the bore several times, the rod (or rod sections) and the bore brush may become screwed tightly together. If so, loosen the components and continue running the brush through the bore.

7. Run a patch through the bore occasionally while using the brush to help clean out debris. Just replace the bore brush with the rod tip (patch holder) and a wet patch. Always have the bore wet with cleaner before trying to pull a brush through.

Cleaning the Upper Receiver

NOTE: Check to ensure that the fit between the barrel and the upper receiver is tight - if you detect any movement by twisting with your hands, the barrel nut must be retorqued. Take the rifle to a qualified gunsmith or contact Nordic Components for such maintenance.

1. Using a high quality cleaner, clean the inside and outside of the upper receiver of powder fouling, corrosion and dirt. NEVER use a wire brush or any type of abrasive to clean the aluminum upper receiver - you may damage the finish. A toothbrush or stiff-bristled nylon brush is good for loosening any dirt buildup, and won't scratch the receiver.

2. Clean the chamber. Dip a chamber brush in bore cleaner and use at least five plunge strokes and three 360° clockwise rotations. Swab out the bore as described previously to remove solvent and debris.

3. Use the damp bore brush to clean carbon and powder residue from the inside of the upper receiver.

4. Using a cloth moistened with solvent, wipe the bolt assembly clean of any fouling, paying special attention to the bolt face.

5. Wipe all components clean and dry, and inspect for excessive wear, corrosion or mechanical damage. If you notice any excessive wear or damaged components, DO NOT USE THE FIREARM. Have the firearm inspected by a gunsmith or contact Nordic Components.

Cleaning the Lower Receiver

1. Clean all areas of powder fouling, corrosion, dirt, or rust. Again, never use a wire brush or any type of abrasive to clean the aluminum lower receiver.
2. Wipe any fouling or dirt from the fire control group. Carefully clean the magazine release button and the magazine catch on the left side of the receiver.
3. Inspect and clean the bolt catch and takedown/pivot pins. Check to ensure that the bolt catch lifter arm is not dirty or damaged and that it can travel freely.
4. Push down on the buffer retainer and remove the buffer assembly. Clean inside the receiver extension and ensure that the buffer and spring are free of fouling or corrosion.
5. If the collapsible stock does not move freely, remove it from the receiver extension and clean the tube and lock holes. Lightly lubricate the receiver extension and stock latch mechanism.

Lubrication

Lower receiver: Lightly lubricate the inside and outside of the receiver extension, the buffer, buffer spring, and stock latch. Generously lubricate all moving parts inside the lower receiver, including the trigger, hammer, safety, bolt catch, magazine release, etc., and their respective pins and detents. Lubricate the takedown, pivot, and magwell pins and their detents. Use a lightly oiled rag to wipe down the exterior surfaces.

Upper receiver: Lightly lubricate the firing pin and firing pin channel. Generously lubricate the bolt and charging handle surfaces. Use a lightly oiled rag to wipe down the exterior surfaces.

Reassembly

To reassemble the firearm, follow these steps:

1. Insert the buffer spring and buffer (the spring will “lock” around the buffer if you slide the spring on and turn counterclockwise). Depress the buffer detent and push the buffer past the detent, then release.
2. Insert the bolt alignment spring and pin, and align the tabs in the bolt head with the slots on the bolt tail. Once the tabs are aligned, use a punch to push down on the alignment pin and rotate the bolt head until the pin locks the two halves together.
3. Insert the firing pin spring and firing pin. Apply pressure to the firing pin until the firing pin retainer can be pushed completely into its channel.
4. Align the charging handle ears with the cutout in the upper receiver and slide the charging handle in part-way. Insert the bolt into the upper receiver, with the gas key in the charging handle groove. Push the bolt forward and lock the charging handle forward.

NOTE: If the ejection port door is closed, there will be some resistance as the bolt passes the door and pushes it open.

5. To join upper and lower receivers, position the pivot pin lug of the upper receiver between the pivot pin bosses at the front of the lower receiver and push the pivot pin into place.

NOTE: Take care that the bolt catch lifter is properly aligned with the pivot pin before pushing the pin into place.

6. After the pivot pin is in place, lower the upper receiver so that the takedown pin lug slides into place at the rear of the lower receiver and push the takedown pin into place.

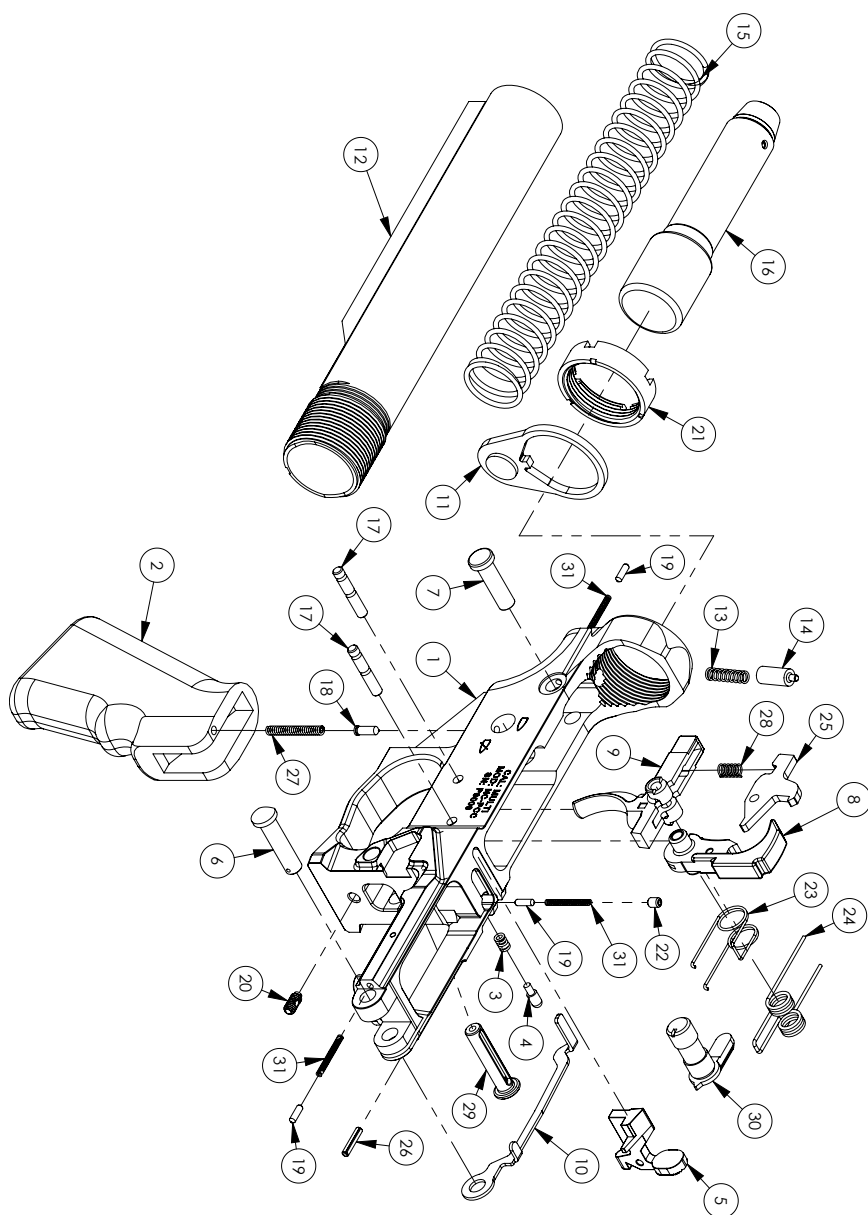
NOTE: The pivot, takedown, and magwell pins are held captive in the lower receiver, meaning they are held in by their detents and springs so they cannot fall out and get lost.



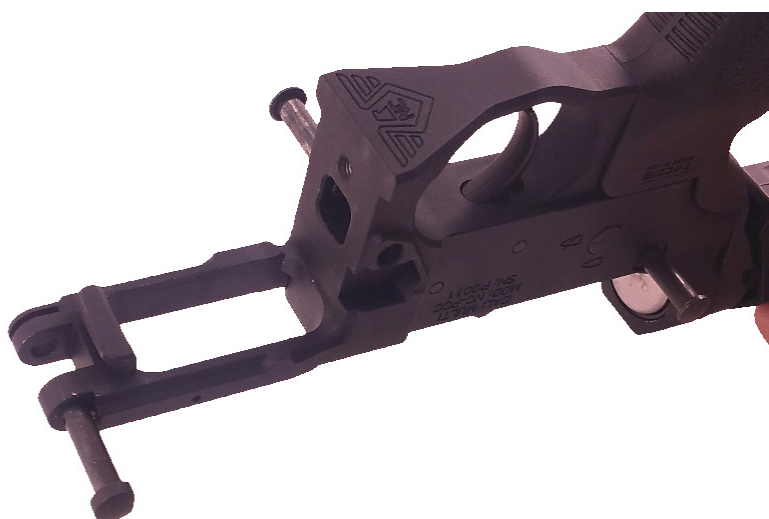
NC-PCC Parts List/Exploded View Reference

- | | |
|----------------------------|-------------------------------------|
| 1 NC PCC LOWER RECEIVER | 39 DUST COVER PIN |
| 2 PISTOL GRIP | 40 FORWARD ASSIST ROLL PIN |
| 3 BOLT CATCH SPRING | 41 CRUSH WASHER |
| 4 BOLT CATCH PLUNGER | 42 FORWARD ASSIST SPRING |
| 5 BOLT CATCH | 43 HANDGUARD COUNTERBORED
INSERT |
| 6 PIVOT PIN | 44 HANDGUARD THREADED
INSERT |
| 7 TAKEDOWN PIN | 45 HANDGUARD FASTENER |
| 8 HAMMER | 46 DUST COVER SPRING |
| 9 TRIGGER | 47 PCC MAG WELL |
| 10 BOLT CATCH LIFTER | 48 PCC MAG CATCH |
| 11 ENDPLATE | 49 MAG CATCH SPRING |
| 12 CARBINE BUFFER TUBE | 50 PCC EJECTOR |
| 13 BUFFER RETAINER SPRING | 51 MAG RELEASE PIN |
| 14 BUFFER RETAINER | 52 MAG RELEASE PIN RETAINER |
| 15 BUFFER SPRING | 53 EJECTOR SCREW |
| 16 BUFFER ASSEMBLY | 54 NC9 BOLT FRONT |
| 17 HAMMER/TRIGGER PIN | 55 NC9 BOLT REAR |
| 18 SELECTOR DETENT | 56 NC9 CARRIER KEY |
| 19 TAKEDOWN PIN DETENT PIN | 57 NC9 EXTRACTOR |
| 20 MAGWELL SPRING PLUNGER | 58 NC9 FIRING PIN |
| 21 CASTLE NUT | 59 FIRING PIN SPRING |
| 22 MAGWELL DETENT RETAINER | 60 FIRING PIN RETAINER |
| 23 TRIGGER SPRING | 61 BOLT ALIGNMENT PIN SPRING |
| 24 HAMMER SPRING | 62 EXTRACTOR PIN |
| 25 DISCONNECTOR | 63 EXTRACTOR PIN RETAINER |
| 26 BOLT CATCH PIN | 64 CARRIER KEY FASTENERS |
| 27 SAFETY DETENT SPRING | 65 BOLT ALIGNMENT PIN |
| 28 DISCONNECTOR SPRING | 66 EXTRACTOR SPRING W/
BUFFER |
| 29 MAG WELL PIN | |
| 30 SAFETY SELECTOR | |
| 31 TAKEDOWN PIN SPRING | |
| 32 UPPER RECEIVER | |
| 33 BARREL | |
| 34 BARREL NUT | |
| 35 MUZZLE DEVICE | |
| 36 HANDGUARD | |
| 37 FORWARD ASSIST | |
| 38 DUST COVER | |

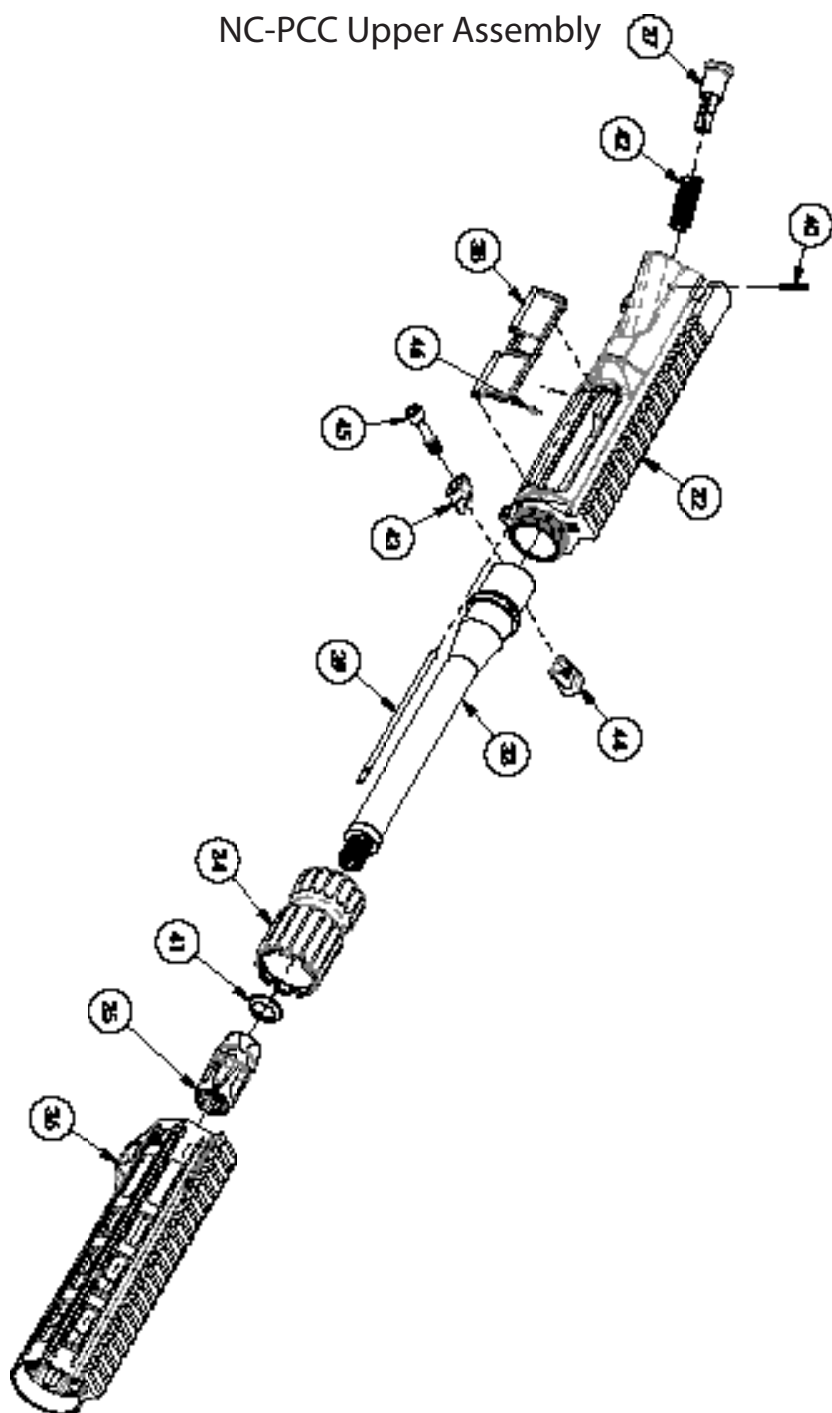
NC-PCC Lower Receiver Assembly



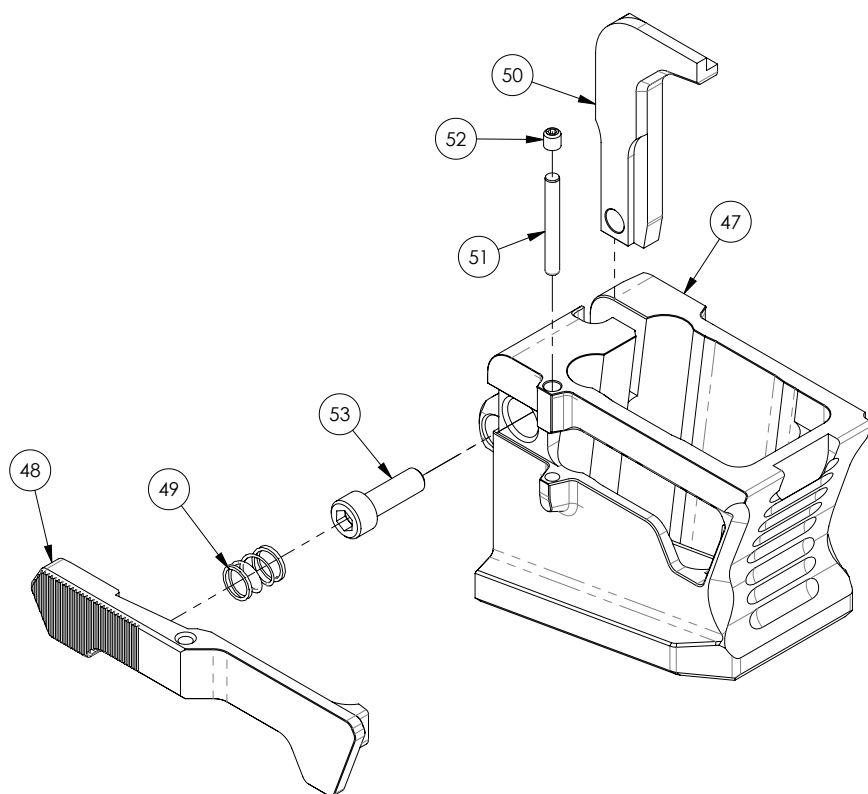
NC-PCC Lower Receiver Assembly



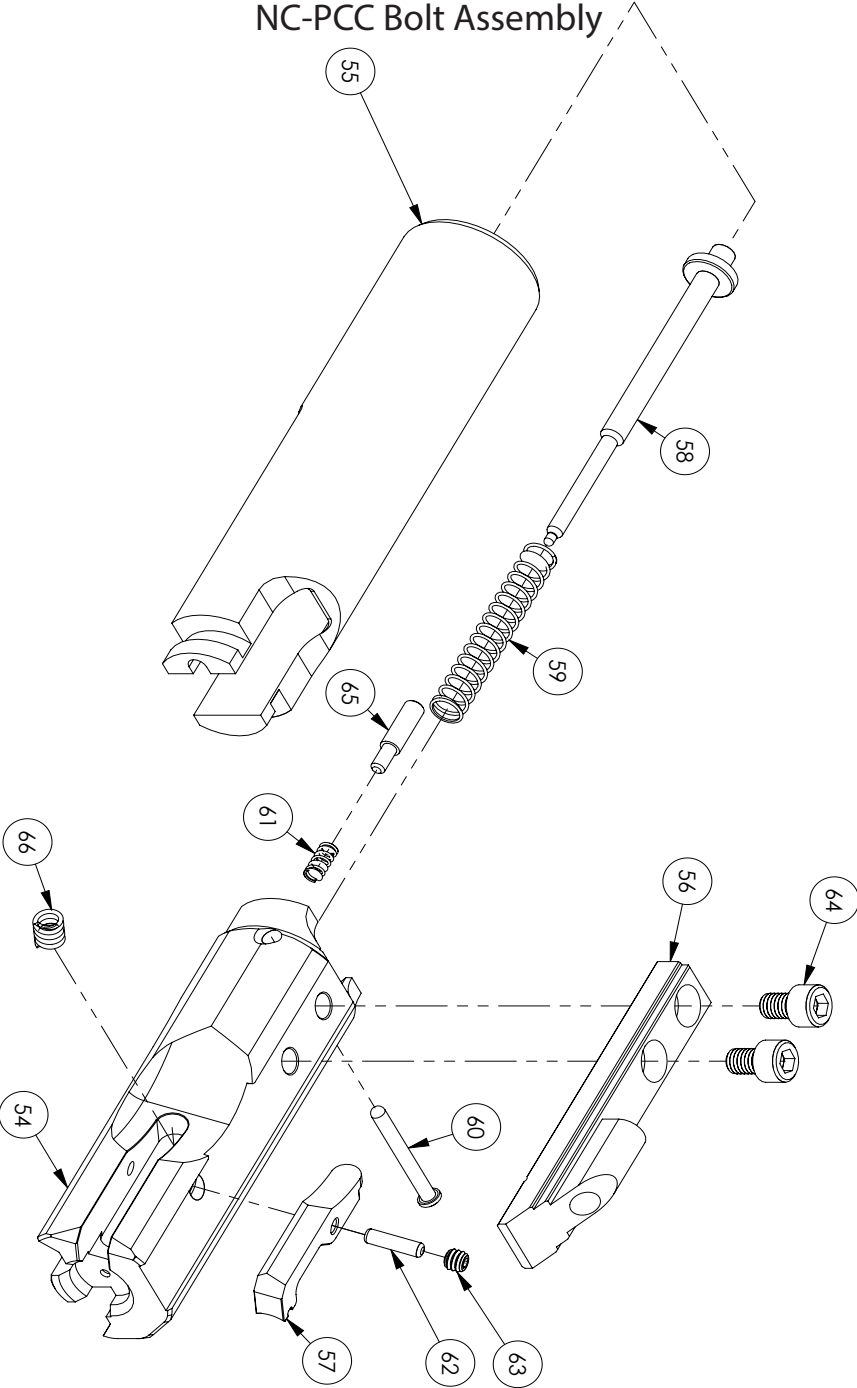
NC-PCC Upper Assembly



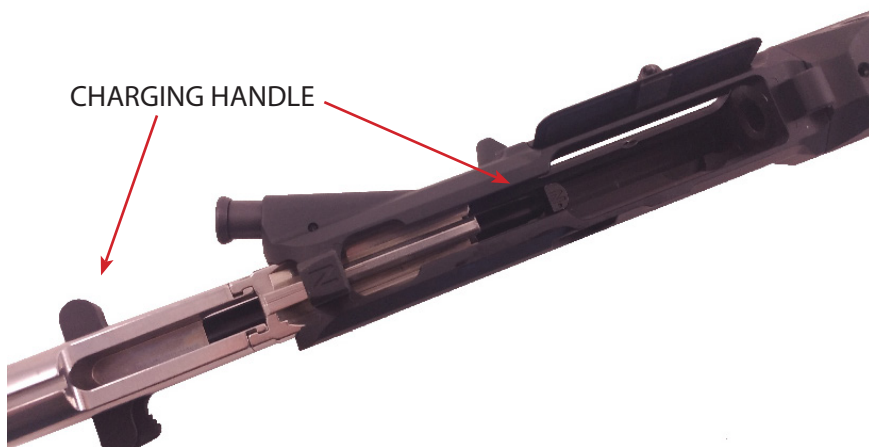
NC-PCC Magwell Assembly



NC-PCC Bolt Assembly



NC-PCC Bolt Assembly



FOR SERVICE, TECHNICAL SUPPORT, OR WARRANTY ISSUES, CONTACT:

NORDIC COMPONENTS
79 E. 8TH ST.
WACONIA, MN 55387

SALES: 952.442.8908
TECHNICAL SUPPORT: 952.442.8915
SALES@NORDICCOMP.COM